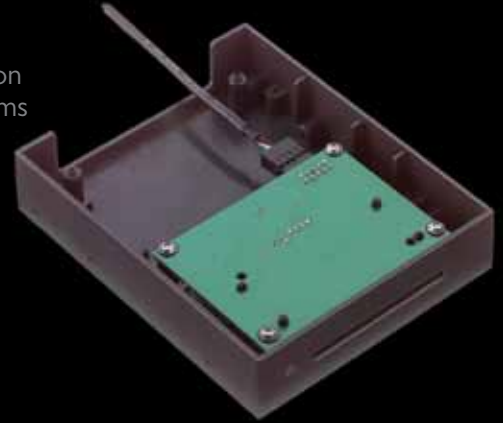


# OMNIKEY® 3921 PC Built-In USB Reader

- ▶ **Plug and Play** - Designed to facilitate easy device installation with high quality drivers\* for all major PC operating systems
- ▶ **Readily Compliant** - Meets all relevant industry standards for smooth integration in PC environment
- ▶ **Installation-ready** – Designed for integration into standard 3.5” floppy disk bay
- ▶ **Suits Any Application** - Compatible with virtually any contact smart card and major PC operating systems



## ACCESS quality.

The OMNIKEY® 3921 is a high-performance, built-in, Plug and Play USB reader that can be easily integrated into the 3.5” floppy bay housing within a desktop computer. Featuring a transmission speed to the card of up to 420kbps, the OMNIKEY 3921 reader is compliant with all relevant industry standards.

Compatible with virtually any contact smart card or operating system, as well as a variety of applications, this easy-to-install OMNIKEY reader is well-suited for a wide range of smart card operations, including single sign-on, online-banking or digital signature applications.

- ▶ Meets major standards including ISO 7816, EMV 2000, Microsoft® WHQL, USB CCID, PC/SC and HBCI (Home Banking Computer Interface)
- ▶ Usage within an application is based on standardized interfaces like PC/SC, OCF (Open Card Framework) or CT-API
- ▶ Available in a bulk version with internal USB cable for main board connector or as retail version with internal & external USB cable, slot bracket, driver CD and mounting screws
- ▶ USB CCID support makes integration into an existing system the easiest ever, by connecting host and smart card reader without the need of additional drivers
- ▶ All major operating systems supported
- ▶ Meets GSA FIPS 201 requirements
- ▶ Supports high speed data transmission

\* For drivers download, please visit [www.hidglobal.com/omnikey](http://www.hidglobal.com/omnikey)

# Specifications

|  |   |
|--|---|
| <b>Base Model Number</b>               | OMNIKEY® 3921   |
| <b>Dimensions</b>                      | 4.92" x 3.94" x 0.98" / 125 x 100 x 25mm  |
| <b>Weight (with cable)</b>             | 3.25 oz / 92 g  |
| <b>Power supply</b>                    | Bus powered   |
| <b>Operating temperature</b>           | 32°-131° F (0° - 55° C)   |
| <b>Operating humidity</b>              | 10-90% rH   |
| <b>HOST INTERFACE</b>                  |   |
| <b>Host Interface</b>                  | USB 2.0 CCID <sup>1</sup> (also compliant with USB 1.1)   |
| <b>Transmission speed</b>              | 12 Mbps (USB 2.0 full speed)  |
| <b>SMART CARD INTERFACE</b>            |   |
| <b>Standards</b>                       | ISO 7816 & EMV <sup>2</sup> 2000 Level I  |
| <b>Protocols</b>                       | T=0, T=1, 2-wire: SLE 4432/42 (S=10), 3-wire: SLE 4418/28 (S=9), I <sup>2</sup> C (S=8)   |
| <b>Card size</b>                       | ID-1 (full-size)  |
| <b>Smart Card interface speed</b>      | 420 kbps (when supported by card)   |
| <b>Smart Card clock frequency</b>      | Up to 8 MHz   |
| <b>Supported card types</b>            | 5V, 3V and 1.8V Smart Cards, ISO 7816 Class A, B and C  |
| <b>Power to Smart Card</b>             | 60 mA   |
| <b>Smart Card detection</b>            | Movement detection with auto power-off / Automatic detection of smart card type/ Short circuit and thermal protection   |
| <b>8 Pin Handling</b>                  | C4 / C8 supported   |
| <b>Supported APIs</b>                  | PC/SC driver (ready for 2.01), CT-API (on top of PC/SC), Synchronous-API (on top of PC/SC), OCF (on top of PC/SC)   |
| <b>PC/SC Driver Support</b>            | Windows® 98 / ME, 2000 / XP (32 bit), 2003 Server, Windows® CE 5.0 / CE.NET (depending on hardware), Windows® XP 64 bit (AMD64, EM64T, IA64), Windows® Vista (32 bit / 64 bit), Linux®, Mac® OS X (PowerPC / Intel), Mac® OS X 10.5 Intel |
| <b>Embedded Technology</b>             | OMNIKEY® Smart@Link Chipset   |
| <b>Status indicator</b>                | Green LED   |
| <b>Reader Board</b>                    | Also available as PCB   |
| <b>Color</b>                           | Dark Gray   |
| <b>Options</b>                         | <b>Customer Specific Logo, Label and Colors:</b> Available upon request   |
| <b>Composition</b>                     | ABS   |
| <b>Connector cable</b>                 | <b>External:</b> 59.1" (150 cm)<br><b>Internal:</b> 31.5" (80 cm)   |
| <b>Durability</b>                      | 100,000 insertions  |
| <b>Meantime between failure (MTBF)</b> | 500,000 hours   |
| <b>Compliance / Certification</b>      | Microsoft® WHQL <sup>3</sup> , EMV <sup>2</sup> 2000 Level I, ISO 7816, HBCI <sup>4</sup> , USB 2.0 (USB 1.1 compatible), CCID <sup>1</sup> , GSA FIPS 201 approved product list  |
| <b>Safety / Environmental</b>          | CE, WEEE, FCC, UL, VCCI, MIC, RoHS  |
| <b>Warranty</b>                        | Two year manufacturer's warranty. (For drivers, see complete lifetime support policy.)  |

1 = Chip Card Interface Device, 2 = Europay® MasterCard® Visa®, 3 = Windows® Hardware Quality Lab, 4 = Homebanking Computer Interface



© 2009 HID Global Corporation. All rights reserved. HID, the HID logo, Omnikey and the Omnikey logo are trademarks or registered trademarks of HID Global in the U.S. and/or other countries. All other trademarks, service marks, and product or service names are trademarks or registered trademarks of their respective owners. Rev. 02/2009

MKT-OMNIKEY\_3921\_DS-EN

[hidglobal.com](http://hidglobal.com)



## ACCESS experience.

HID Global Offices:

**Corporate North America**  
15370 Barranca Pkwy  
Irvine, CA 92618  
U.S.A.  
Phone: (800) 237-7769  
Phone: +1 (949) 732-2000  
Fax: +1 (949) 732-2360

**Asia Pacific**  
19/F 625 King's Road  
North Point  
Island East  
Hong Kong  
Phone: +852 3160-9800  
Fax: +852 3160-4809

**Latin America**  
Circunvalacion Ote. #201 B  
Despacho 2  
Col. Jardines del Moral  
Leon 37160, Gto.  
Mexico  
Tel: +52 477 779 1492  
Fax: +52 477 779 1493

**Europe, Middle East & Africa**  
Haverhill Business Park  
Phoenix Road  
Haverhill, Suffolk  
CB9 7AE  
England  
Phone: +44 (0) 1440 714 850  
Fax: +44 (0) 1440 714 840